

Fittings

Flangecombe offer a large selection of fittings and accessories, suitable for a wide range of applications, push fittings, universal fittings, quick release couplings are available in different dimensions ranging from M3 to G1.

We also offer a large range of nylon tubing, pvc tubing in a variety of colours to suit your needs.

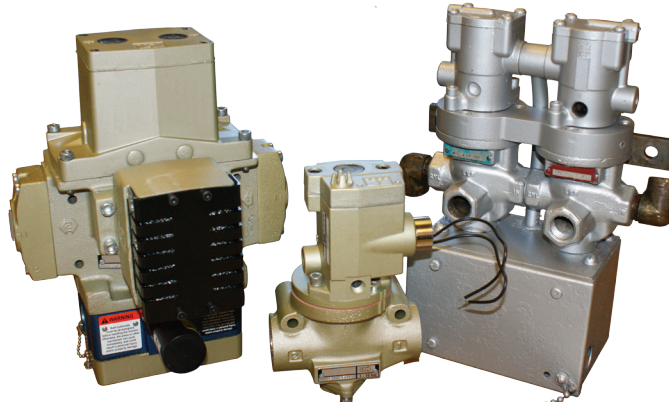


Cylinders

We offer a large range of cylinders with diameters from 6 to 200mm and strokes from 5 to 3000mm. Single and double acting versions are available with or without a through rod. Both magnetic and non magnetic cylinders are available either with or without external guides.

Standard size to compact magnetic or mini cylinders are available speak to one of our team for details.

**WE SUPPLY AND
REPAIR SINGLE
AND DUAL
SAFETY VALVES**



Providers of pneumatic and electrical engineering solutions to customers across the UK.

149 Stringes Lane, Willenhall,
West Midlands WV13 1LW

Tel: 01902 602030 • Fax: 01902 604050

Email: sales@flangecombe-ltd.fsbusiness.co.uk

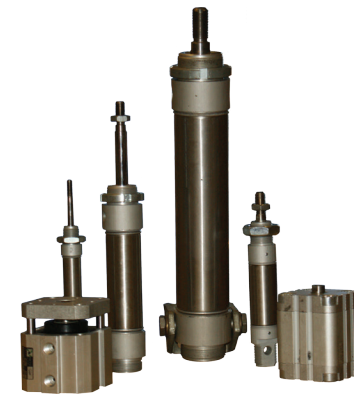
Website: www.flangecombe.co.uk

**CONTACT
US NOW!!**

*And Let Our
Experience
Work For You!*

*Why not visit
our website*

www.flangecombe.co.uk



**PNEUMATIC
ELECTRICAL
AND SYSTEMS
ENGINEERING**

Flangecombe

www.flangecombe.co.uk

www.flangecombe.co.uk

www.flangecombe.co.uk

An Introduction

Established in 1972 to provide a quality pneumatic service in the Midlands, Flangecombe Midland LLP has expanded through customer satisfaction to provide a complete design and manufacturing facility backed by a range of products covering almost the complete pneumatic spectrum.

All products are backed by design expertise and innovation gained by the vast practical experience of our personnel. Our engineers will be pleased to assist in providing technical assistance and proposals to satisfy individual customer requirements.

Engineering facilities are 'in-house' to ensure design and manufacture to customers specification on most projects.

The products stocked, range from air preparation units, standard valves, both poppet and spool design, cylinders, press double valves, silencers and fittings, to sophisticated miniature and fluid logic equipment.

We offer a first class repair service on all pneumatic equipment, valves, tools, cylinders etc.

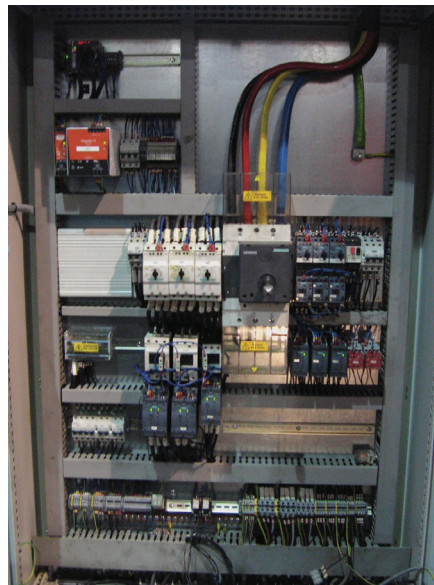


Electrical

Electrical repairs is an important element of the Flangecombe service, with our electrical engineers on call to conduct safety checks, respond to breakdowns and complete repairs on a range of industrial machinery.

We are also able to offer press re-wiring and replacement control panels manufactured complete with drawings and compliant with current health and safety standards.

We undertake Mechanical, Electrical and Hydraulic repair and service work. We strive to provide service at competitive prices. We work on Lathes, Mills, Grinders, Borers, Drills, Capstans, Guillotines, Press Brakes, Band saws and Woodworking Machinery and many other machines. We can carry out all types of Machine Maintenance including: Regular service agreements, Electrical Factory Installations, including Busbar systems, Pneumatic and Hydraulic repairs, Removal of Power Press flywheels prior to insurance inspections, Motor rewinds, Breakdown work.



Power Press Inspections to HSG236 Standard

Manufacturing firms have a duty to comply with the HSG236 standard, which involves the thorough examination of your power presses. This can be a costly and timely exercise if not kept on top of, which is why we have developed our press inspection service to once again take the hassle out of the legislation. Flangecombe can provide specialists to undertake the comprehensive mechanical and electrical examination and report back on the condition of your machines. If any work is necessary, our highly skilled machinists and fitters will be able to complete it quickly to allow production to resume. We can also arrange for the insurance company to undertake the inspection, providing a seamless service from start to finish.